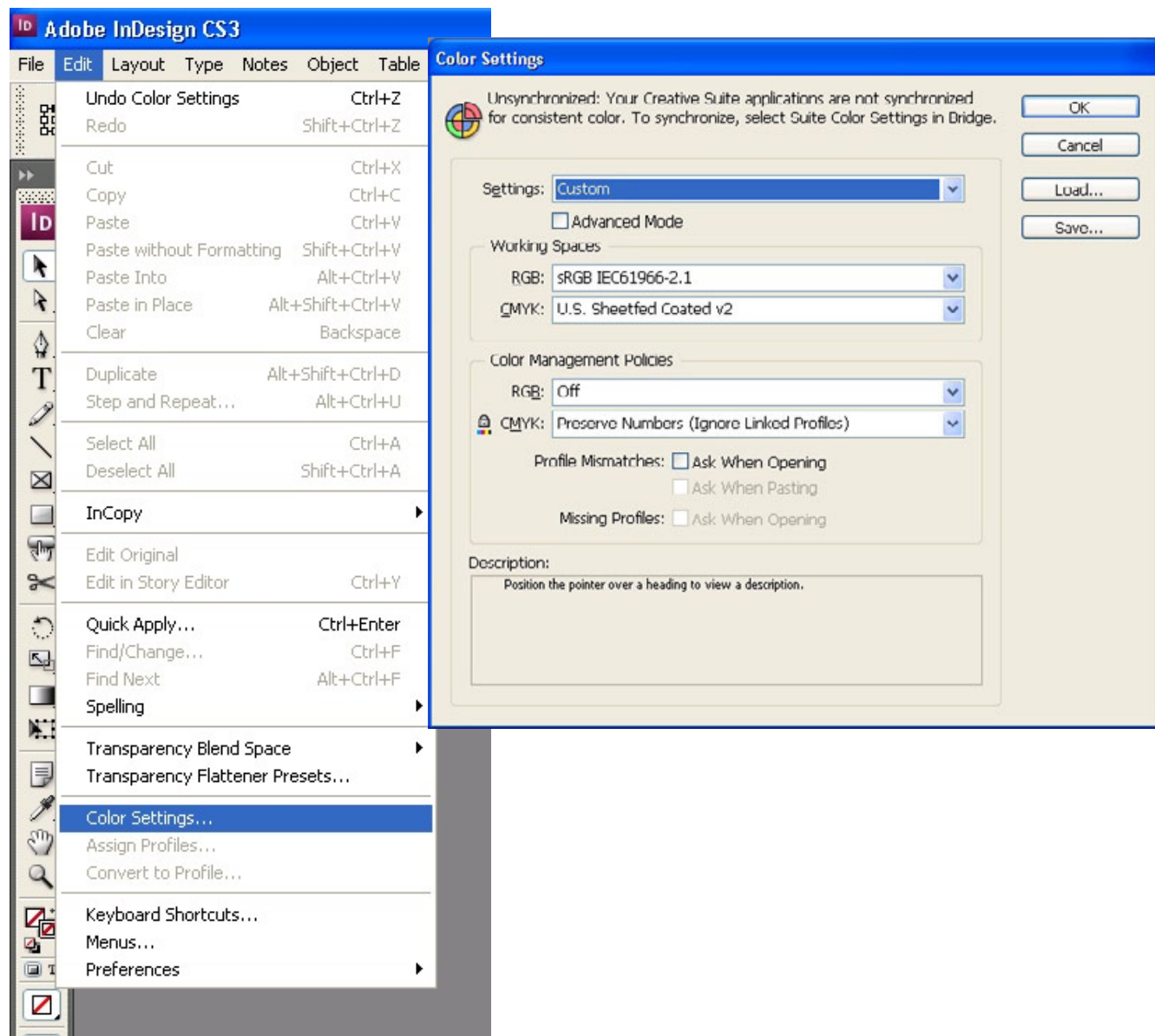


PEL HUGHES

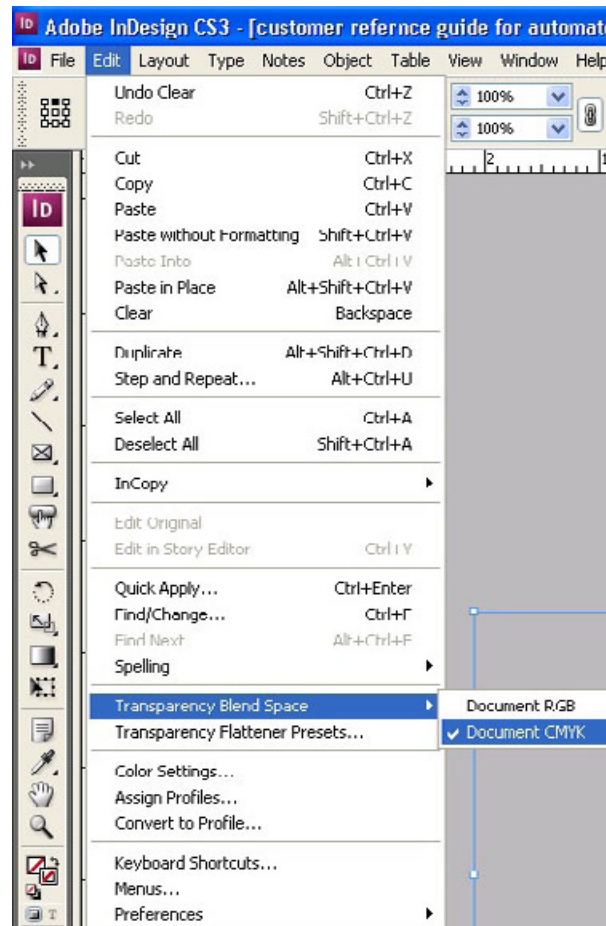
InDesign Color Settings

Selecting the right blend space and document color mode is critical for maintaining color accuracy. Please review the attached screen shots and set accordingly. Selecting the wrong setting can alter your color the moment the document is saved.



PELHUGHES

InDesign Color Settings

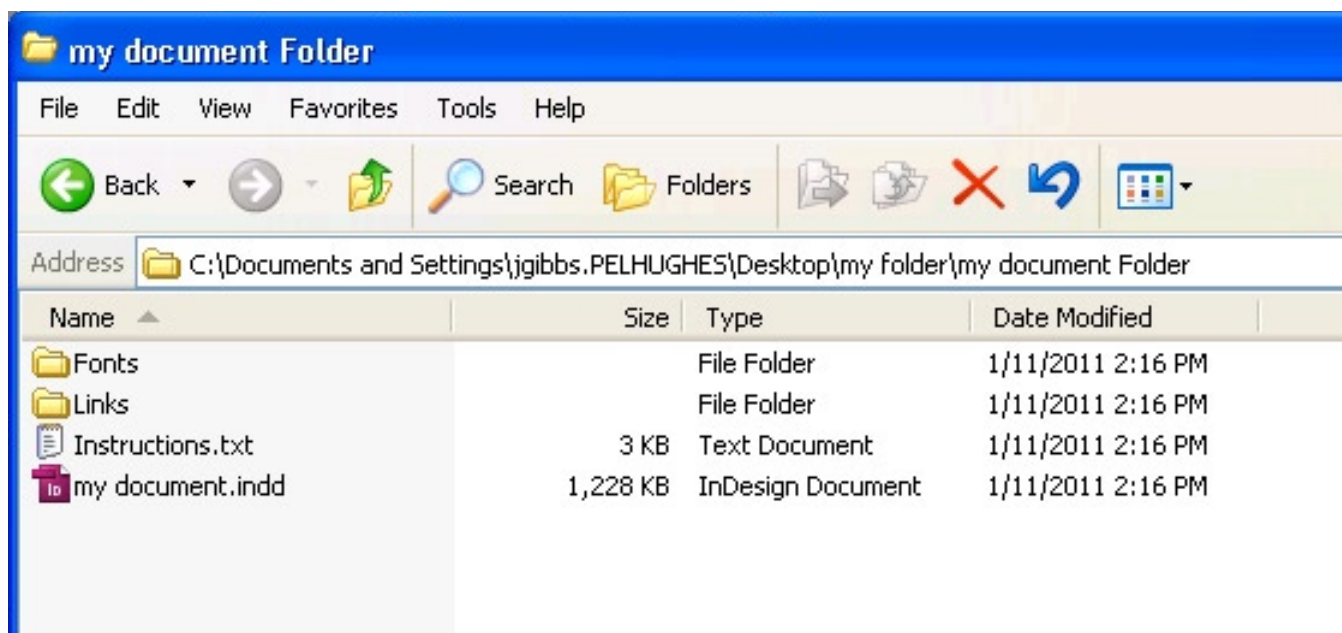


PELHUGHES

InDesign Files

Pel Hughes has the ability to preflight your InDesign files automatically. We support all versions through CS5. Please follow these guidelines so that we may check your incoming files within minutes of your upload. If you have a question that is not answered here, please contact our customer service department at 504.486.8646.

1. Please use the “package” feature in Indesign to collect your fonts and art into a single folder.
2. Please compress this folder into a single file. Please ensure that the document is at the root level inside the enclosing folder. The folders for fonts and links need to be at this same level. Please see the example listed below.
3. Multiple documents can be processed as long as they all reside at the root level. There should only be one font and link folder.
4. If you are using a Mac, please use the archive tool in the Mac OS or Stuffit to compress your folder. This will protect the resource forks in the mac fonts. Do not copy the fonts to a PC as it can make type 1 fonts unusable.
5. If you are using a PC, please use WinZip to compress your files.



PEL HUGHES

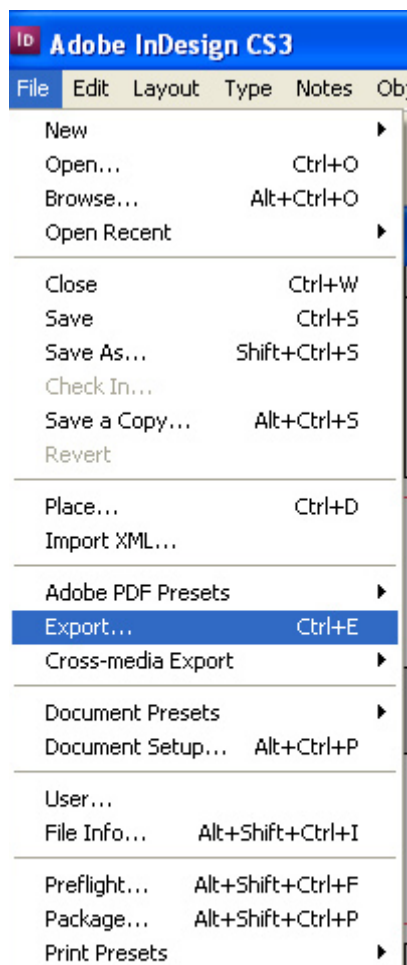
Indesign PDF Export Files

Pel Hughes has the ability to preflight your InDesign files automatically if saved in a pdf format. Please follow these guidelines so that we may check your incoming files within minutes of your upload. The document color mode and blend space should be set to cmyk, not rgb. If you have to change it, is necessary to check your colors in your document as they will have shifted. If you have a question that is not answered here, please contact our customer service department at 504.486.8646.

1. Follow the screen shots in order as shown.

Note: At any place in the screen shots that reference Acrobat 5 format, you can replace with any version up to Acrobat 8

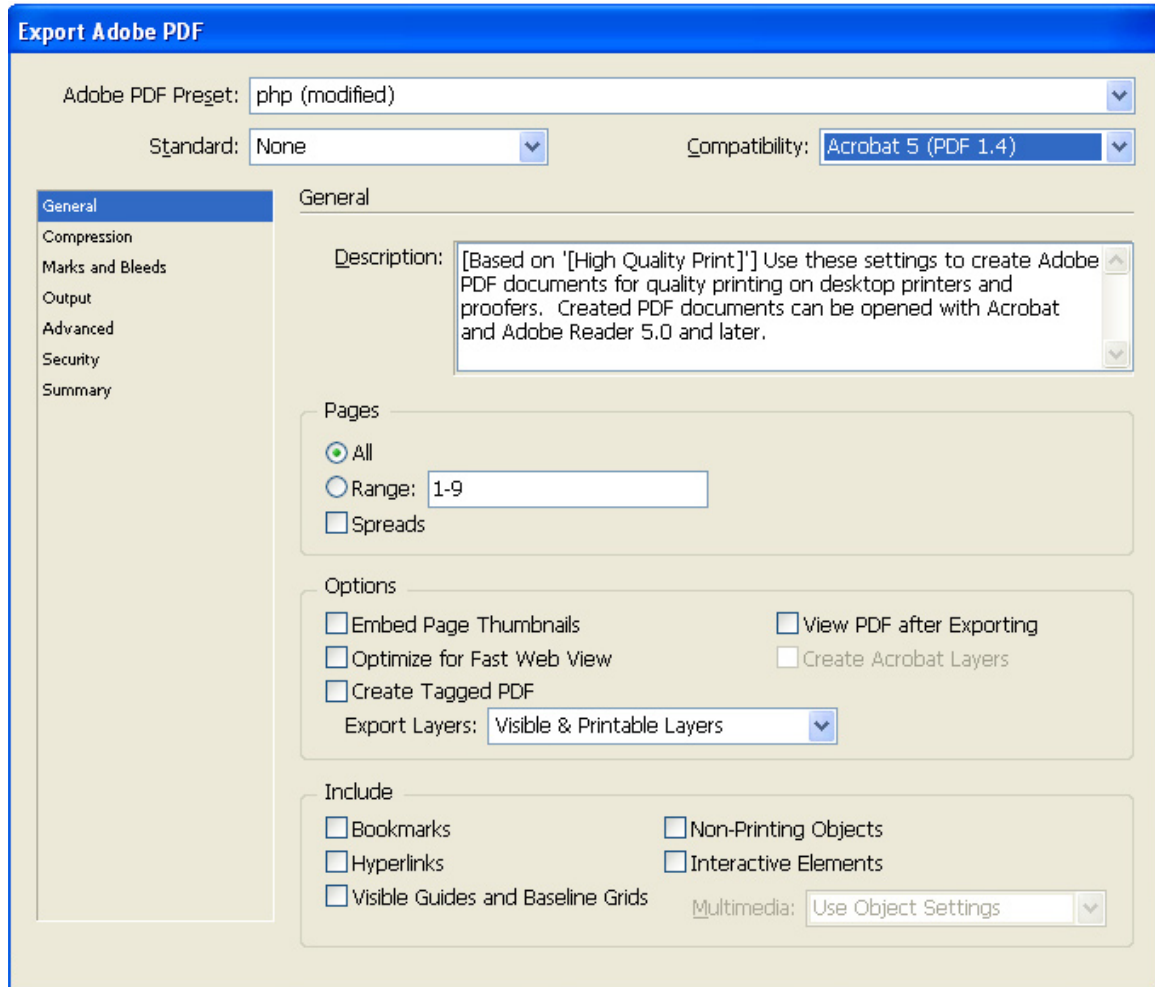
1. Select export



PELHUGHES

Indesign PDF Export Files

2. Under the general tab, set your preferences to look like the screen shot. The compatability should be set to Acrobat 5 or higher



PELHUGHES

Indesign PDF Export Files

3. Under the compression tab, set your preferences as in the screen shot. Zip compression is very important. It is a lossless compression. Any other setting will lose quality.

The screenshot shows the 'Export Adobe PDF' dialog box with the 'Compression' tab selected. The 'Adobe PDF Preset' is set to 'php (modified)'. The 'Standard' is 'None' and 'Compatibility' is 'Acrobat 4 (PDF 1.3)'. The left sidebar shows the 'Compression' tab is active. The main area is divided into three sections: Color Images, Grayscale Images, and Monochrome Images. Each section has settings for downsampling, compression, and image quality. At the bottom, there are checkboxes for 'Compress Text and Line Art' and 'Crop Image Data to Frames', and buttons for 'Save Preset...', 'Export', and 'Cancel'.

Image Type	Do Not Downsample	for images above:	pixels per inch	Compression	Image Quality	Tile Size
Color Images	Do Not Downsample	300	450	ZIP	8-bit	128
Grayscale Images	Do Not Downsample	300	450	ZIP	8-bit	128
Monochrome Images	Do Not Downsample	1200	1800	CCITT Group 4		

☐ Compress Text and Line Art
 ☒ Crop Image Data to Frames

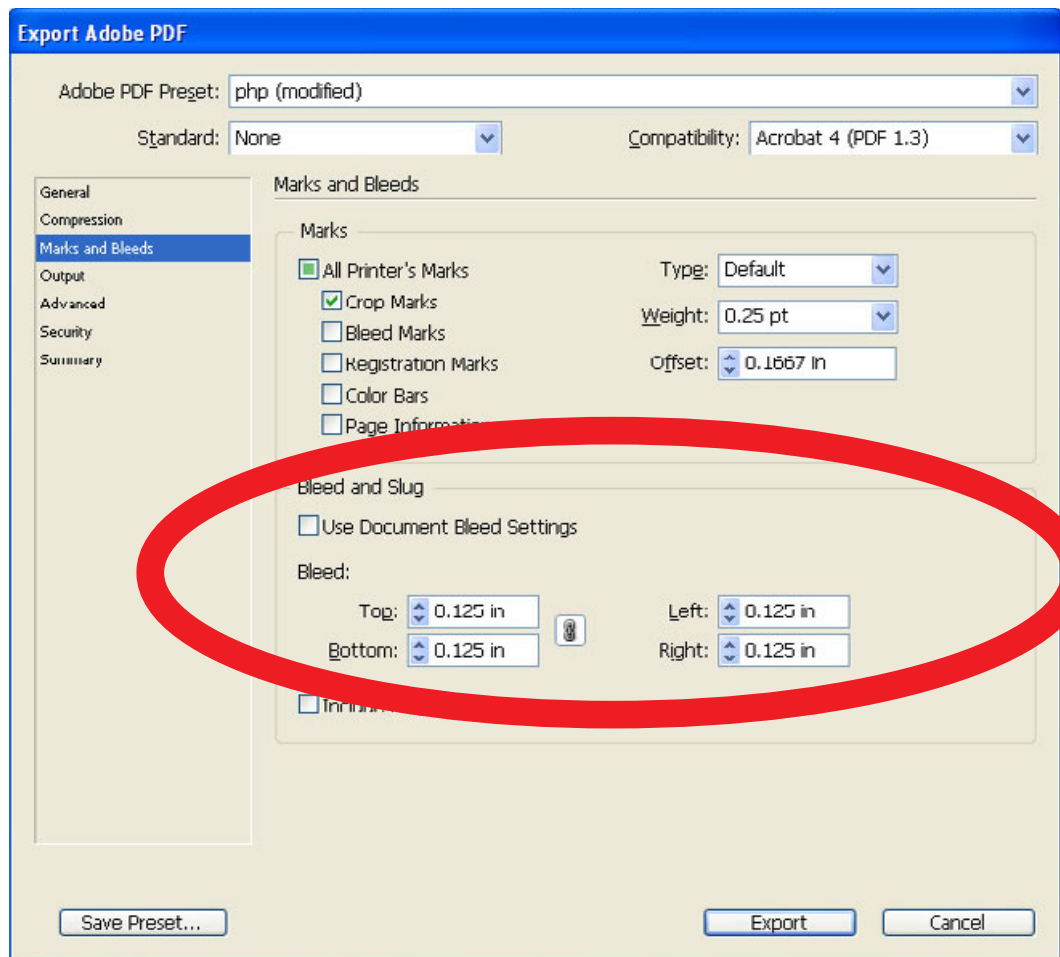
Save Preset... Export Cancel

PELHUGHES

Indesign PDF Export Files

4. Under the marks tab, set your preferences as in the screen shot. Crop marks need to have an offset of 12 points or .1667 inches. Be sure to include .125 inches for bleed if necessary.*

* Bleed is where the document has art or images that print to the edge of the sheet. These items must extend past the edge of the sheet .125 inches. An example appears on the next page.



PELHUGHES

Bleed Example

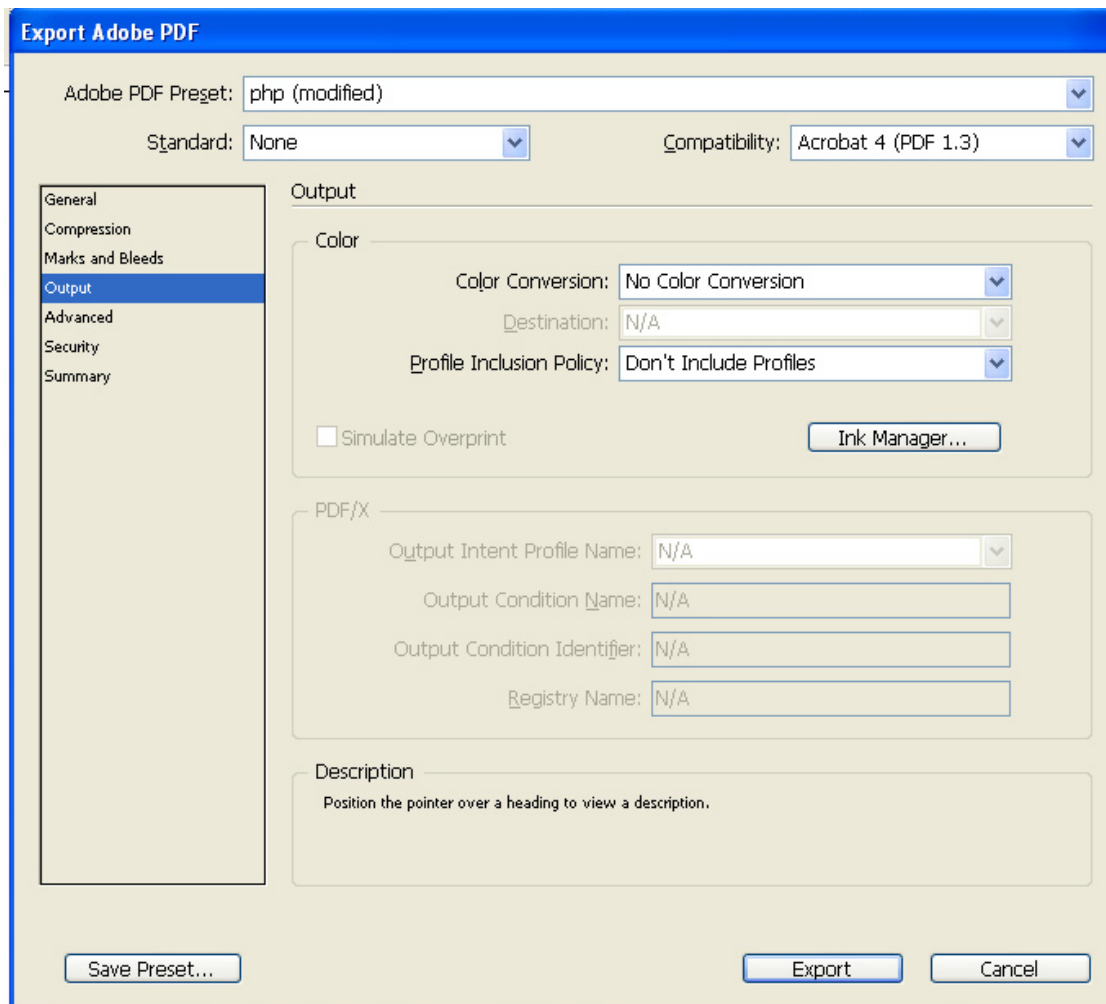


PELHUGHES

Indesign PDF Export Files

5. Under the output tab, set your preferences as in the screen shot. Set the color conversion to none. There is no need to include profiles*

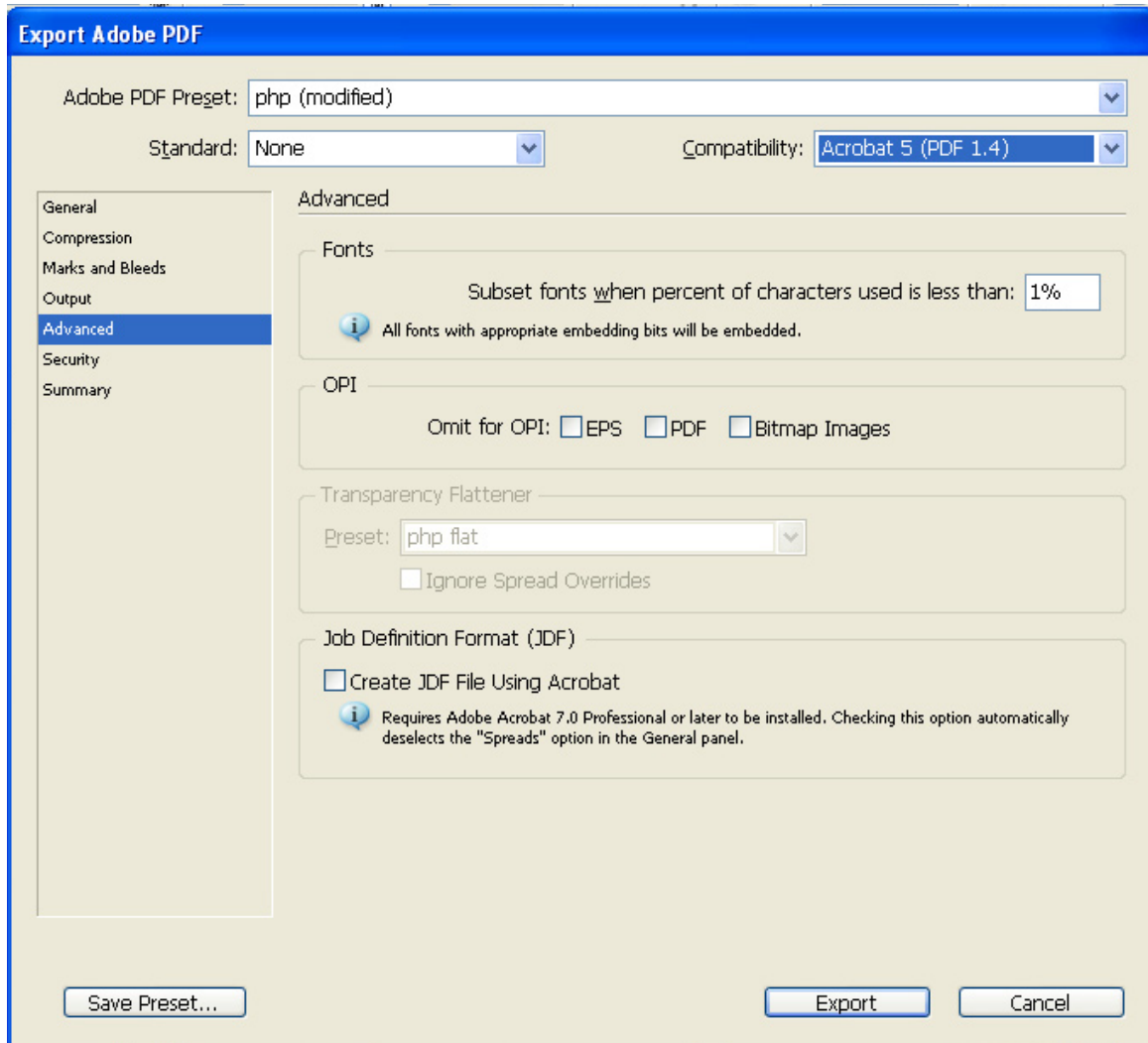
*Color conversion and including profiles are only good if we have color profiled your printer and created a device link for you to use.



PEL HUGHES

Indesign PDF Export Files

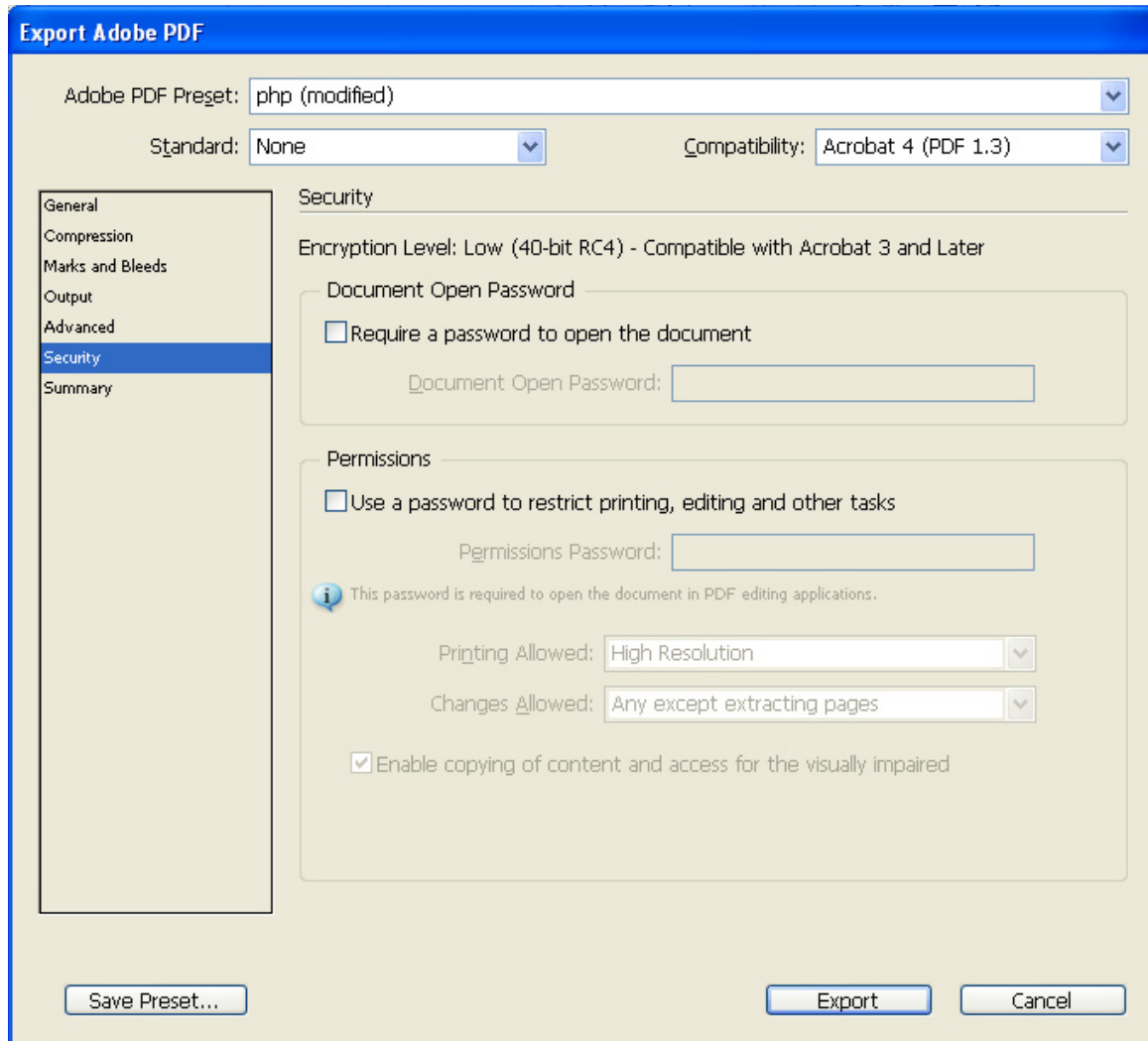
6. Under the advanced tab, set your preferences as in the screen shot. Subset fonts to 1% (This allows us to make small text changes for you.)



PEL HUGHES

Indesign PDF Export Files

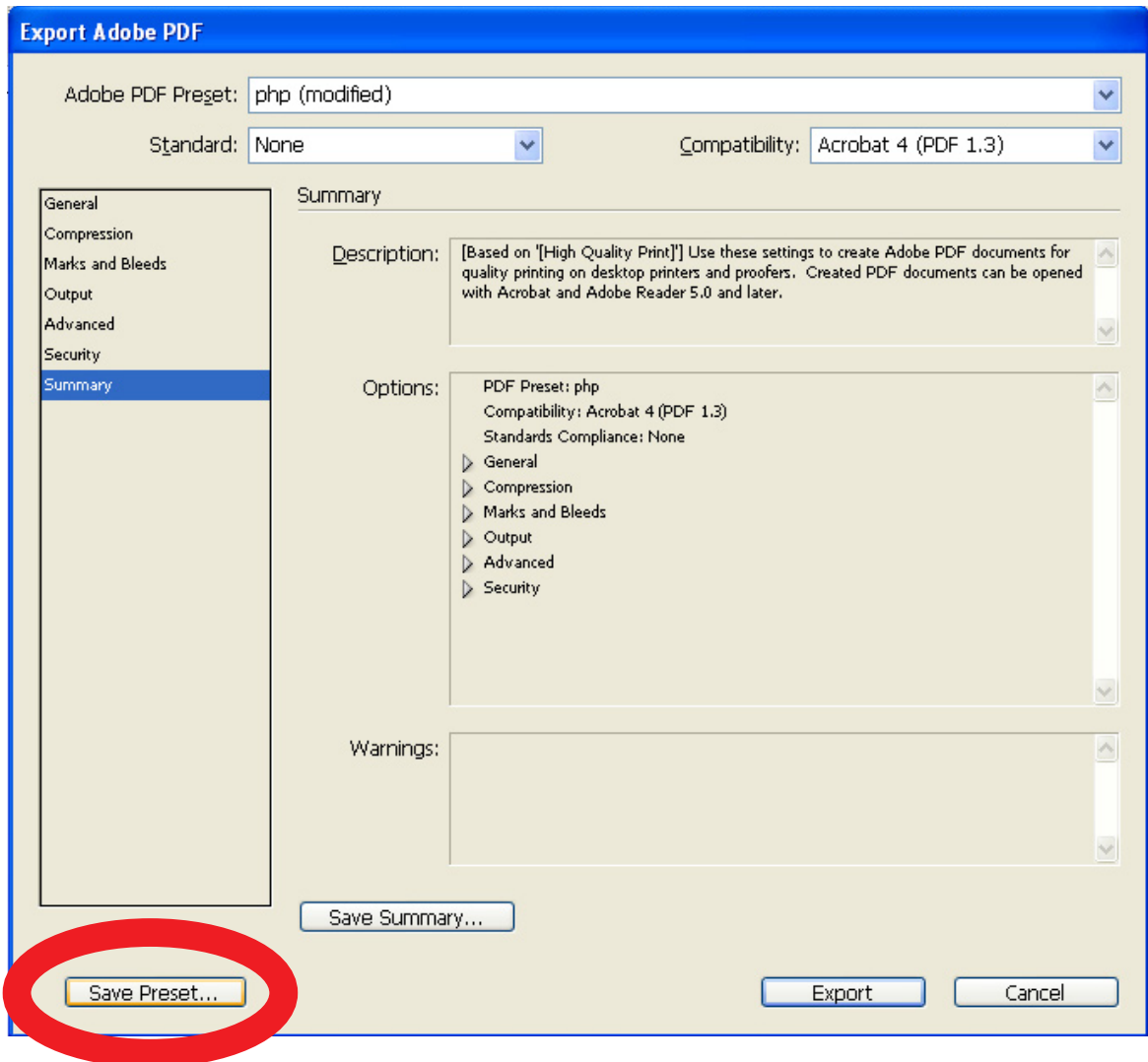
7. Under the security tab, set your preferences as in the screen shot. Ensure there is no security set for the document.



PELHUGHES

Indesign PDF Export Files

8. Under the summary tab, save your preset so that the next time you export a pdf, select your preset and all the settings will be correct.



PELHUGHES

Indesign PDF Export Files

9. Give your preset a name.

